

# Partners for Growth



## Decisive Farming by TELUS Agriculture teams up with GrainFox

The partnership between Decisive Farming by TELUS Agriculture and GrainFox marks a transformative step forward for modern agriculture. By synergizing the two powerful platforms, a new era of efficiency and insight emerges, directly benefiting producers.

This partnership ensures that a producer's data seamlessly flows between Decisive Farming's intuitive platform and GrainFox's comprehensive farm wealth solutions. As a result, producers can effortlessly harness the power of their data, optimizing their farm operations with unparalleled precision. A significant advantage of this partnership is the exclusive opportunity for Decisive customers to access GrainFox subscriptions at a special discounted rate, enhancing the accessibility of these cutting-edge tools. This seamless integration empowers producers to make informed decisions, driving the success and sustainability of their farm businesses to new heights – all the way from bin to bank.

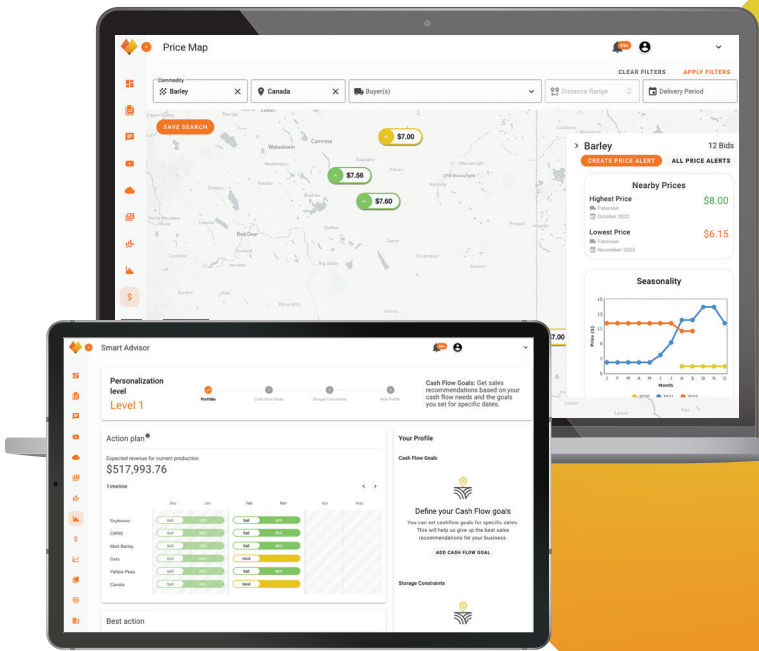
## What is GrainFox?

GrainFox is a data-driven farm wealth solutions platform designed to help producers build a clearer path from bin to bank. The Smart Advisor tool delivers personalized sales recommendations that are generated from the producer's own crop portfolio mix, cash flow goals, storage constraints, and risk tolerance. With Smart Advisor at its core, the GrainFox farm wealth toolkit features many other powerful tools designed to provide producers with deeper insights into their grain marketing decisions.

**GrainFox**  
Farm wealth solutions. Anywhere, any time.

Click to play

**Sign up now to get special pricing**



## Why GrainFox is Right for Every Producer



### Sell Smarter

Upload your farm details, like cash flow goals and storage constraints, and get personalized sales recommendations based on your unique needs. Know when to sell and when to hold.



### Keep Your Finger on the Pulse(s)

Get real-time expert market analysis, find and compare crop prices, set Price Alerts for the commodities that matter to you, and get all the market information you need in one place.



### Dig Deeper Into Your Data

Use powerful tools like ROI Calculator and Cash Flow Planner to help you set clear goals, make predictions, and identify areas for improvement. Test out scenarios and make a plan.



### Build a Lasting Legacy

Don't leave money on the table. Using your own farm details, you can measure your success year after year and build toward a stronger future for your business and beyond.

**Your work is worth more.**

## Your Farm Wealth Toolkit



### Smart Advisor

Smart Advisor combines your crop portfolio mix, cash flow goals, storage constraints, and risk tolerance to deliver deeply personalized sales recommendations, customized for your farm business.



### Farm Profile

Farm Profile helps you manage your entire crop portfolio, helping you determine what's sold and unsold, while tracking inventory, sales, and deliveries. View detailed reports, including the potential value of your portfolio.



### Price Finder

GrainFox's interactive Price Map lets you see real-time crop prices across North America based on commodity, buyer, location, and delivery period. Set Price Alerts so you never miss an opportunity.



### Resource Hub

Stay up to date on expert market analysis and commentary, along with general sales recommendations, geopolitical insights, crop market updates, special reports, and much more.



### Risk Profile

Risk Profile features a detailed questionnaire that helps you determine your risk tolerance when it comes to selling your crops. Your risk tolerance will then affect the personalized sales recommendation you receive from Smart Advisor.



### Cash Flow Planner

Use Cash Flow Planner to track cash inflow and outflow on a month-by-month basis, make forecasts, and set cash flow goals to help Smart Advisor provide you with personalized sales recommendations.



### ROI Calculator

How much of every dollar you make is going toward expenses? Tabulate your fixed and variable expenses, compare them to provincial benchmarks, and calculate potential returns. Identify areas for improvement and adjust your plans as necessary.

**GrainFox**  
**GrainFox for Producers**  
Quick walkthrough

**Click to play**

**Partner Perks: Special Pricing on GrainFox subscriptions!**

[Click here to get started](#)



Follow us!  
@GrainFoxApp



[grainfox.ca](http://grainfox.ca)